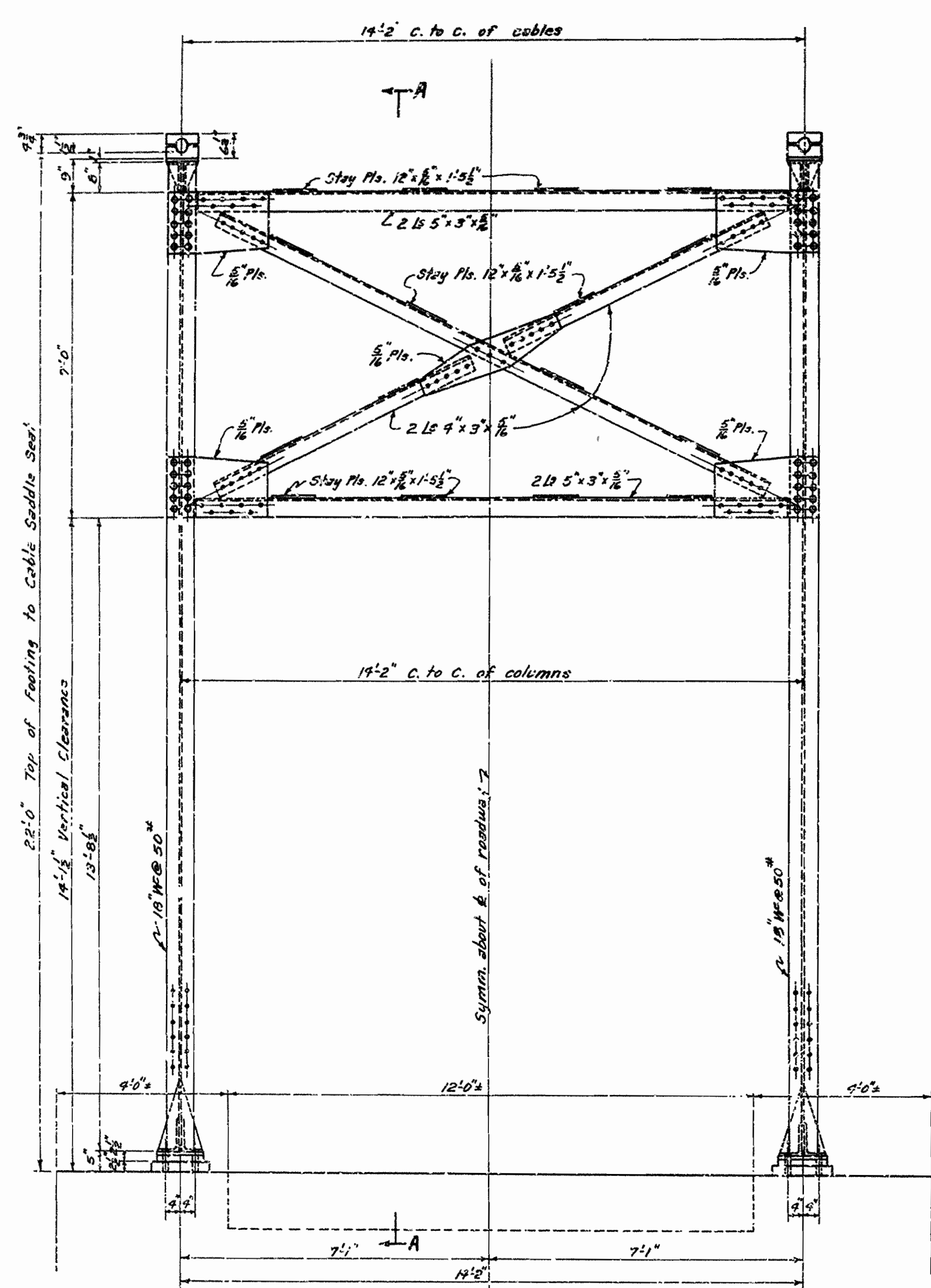
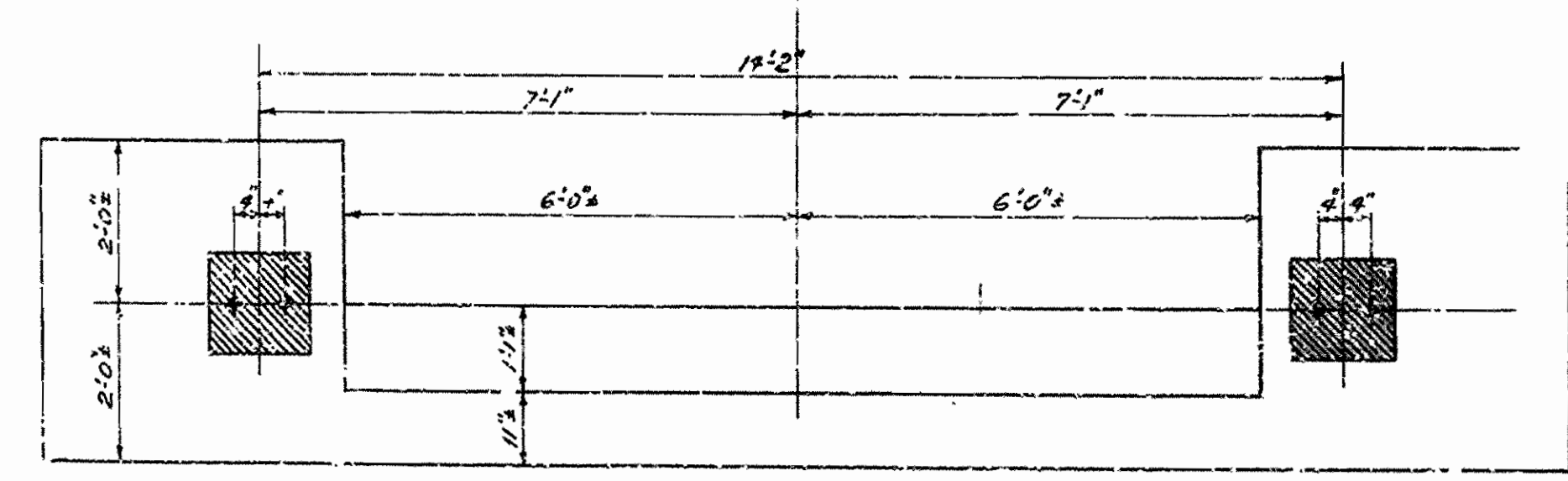


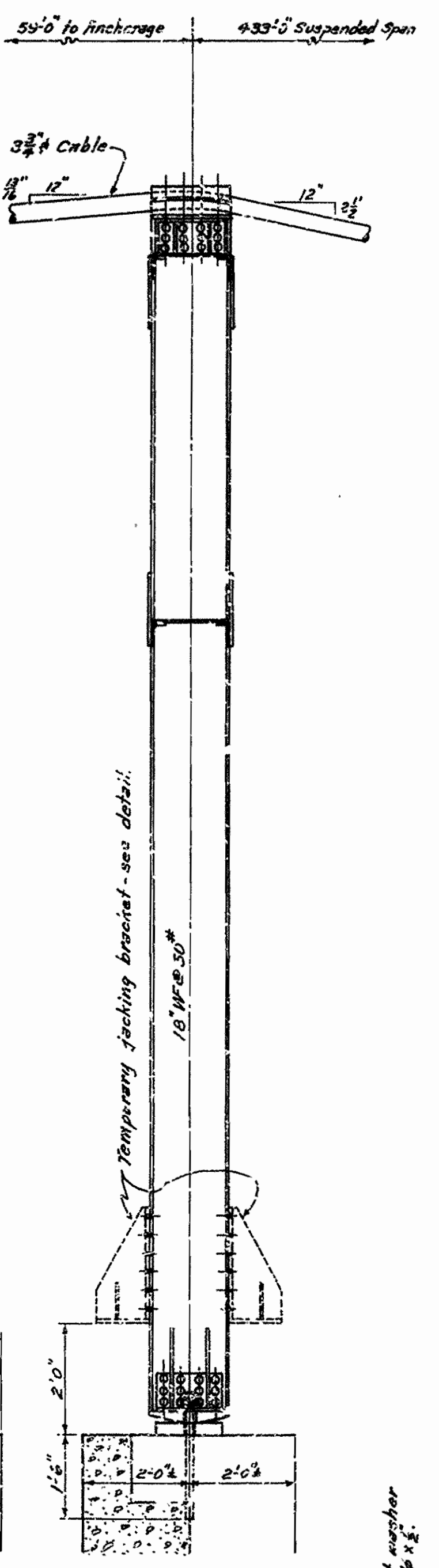
FED. ROAD DIST. NO.	STATE	PROJECT NO.	FISCAL YEAR	SHEET NO.	TOTAL SHEETS
6	ARK.				
STATE JOB NO.					



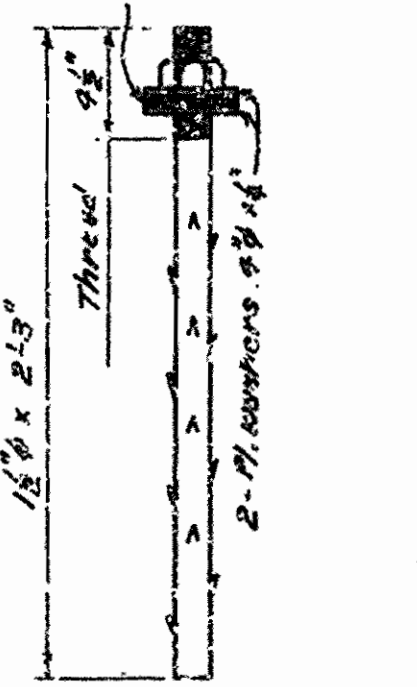
SOUTH ELEVATION OF TOWER



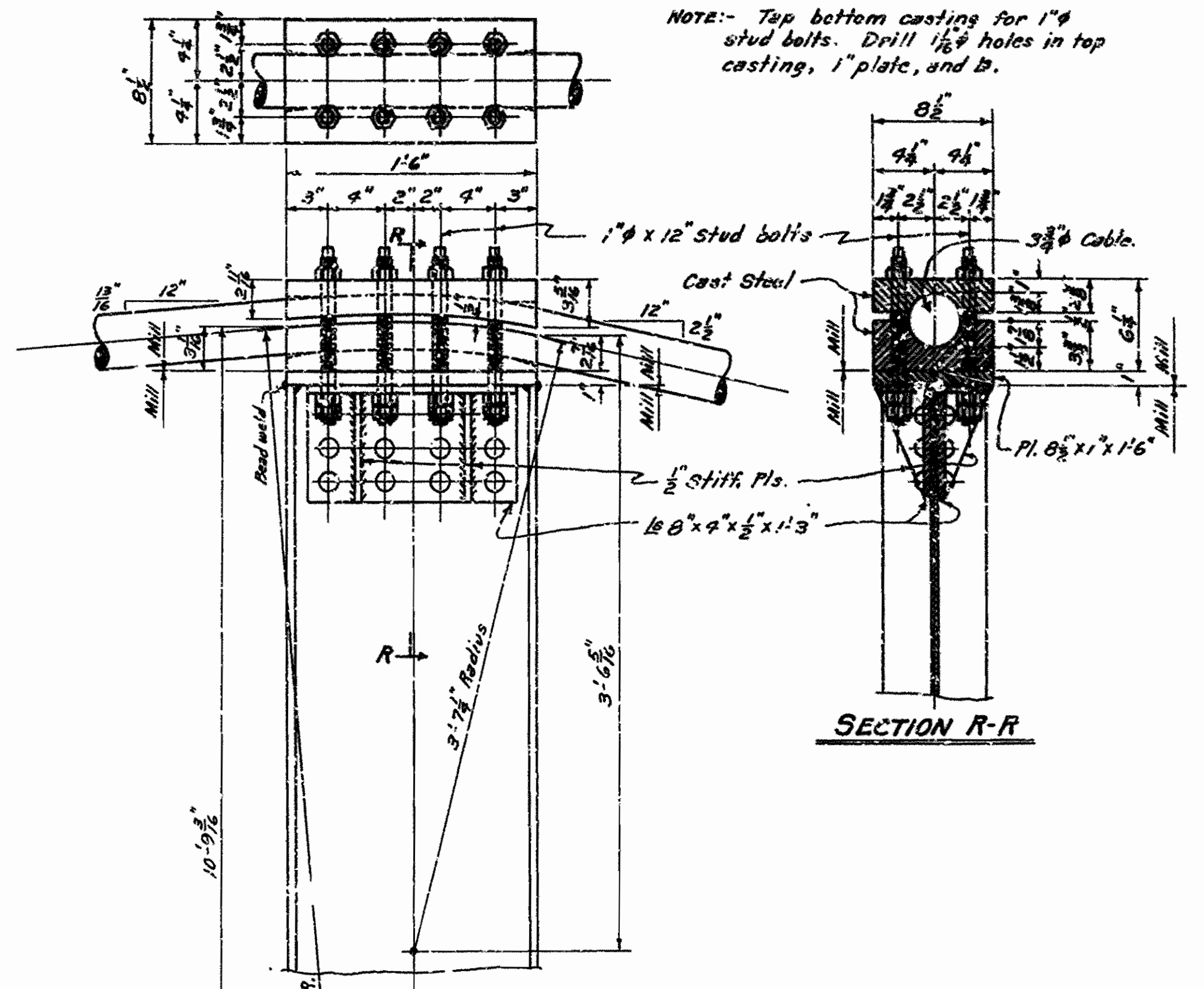
PLAN OF SOUTH TOWER ABUTMENT



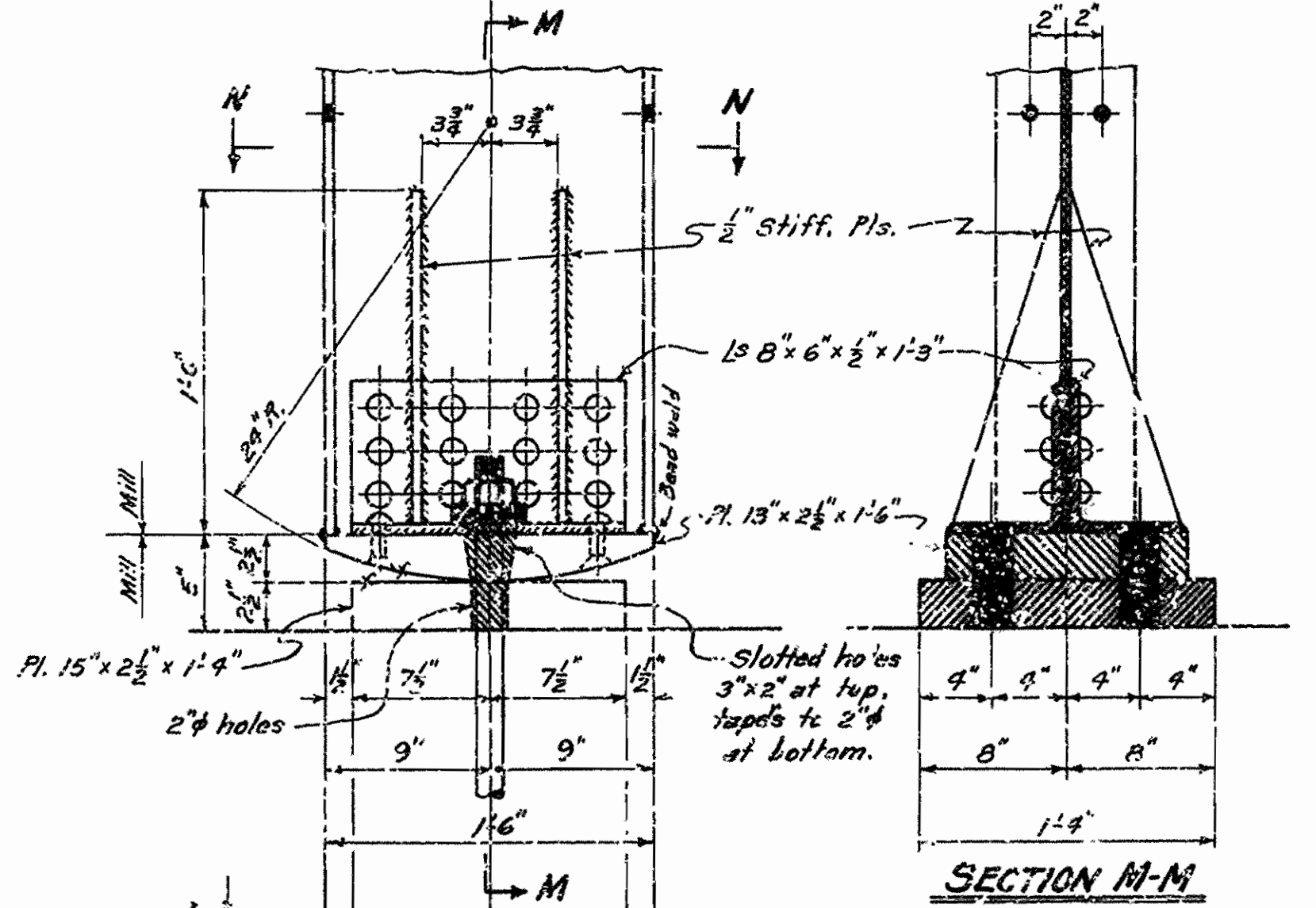
SECTION A-A



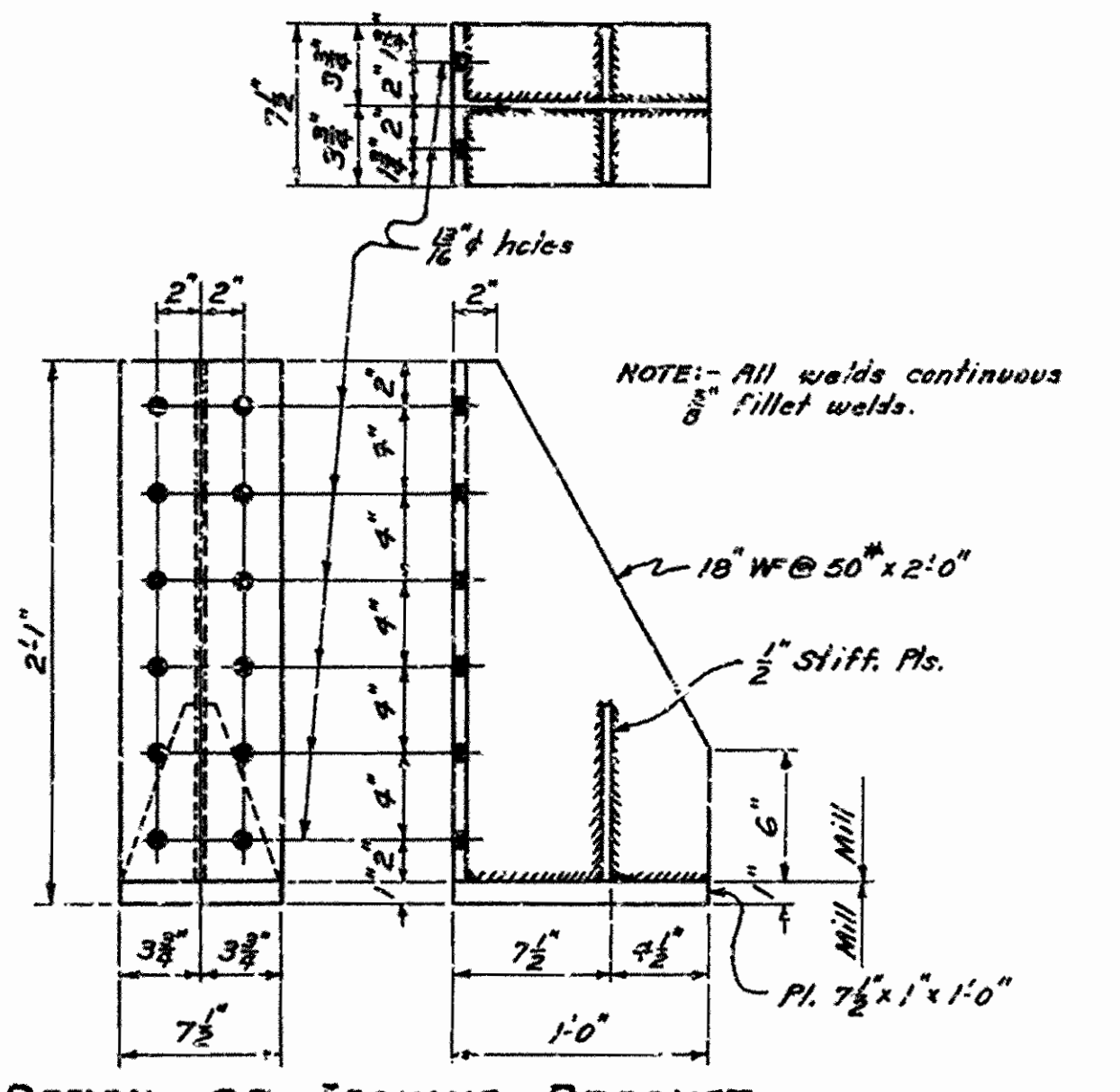
DETAIL OF ANCHOR BOLTS
Scale: 1/4" = 1'-0"



DETAILS OF CABLE SADDLE
Scale: 1/4" = 1'-0"



SECTION M-M
DETAILS OF TOWER SHOES
Scale: 1/4" = 1'-0"



DETAIL OF JACKING BRACKET
Scale: 1/4" = 1'-0"

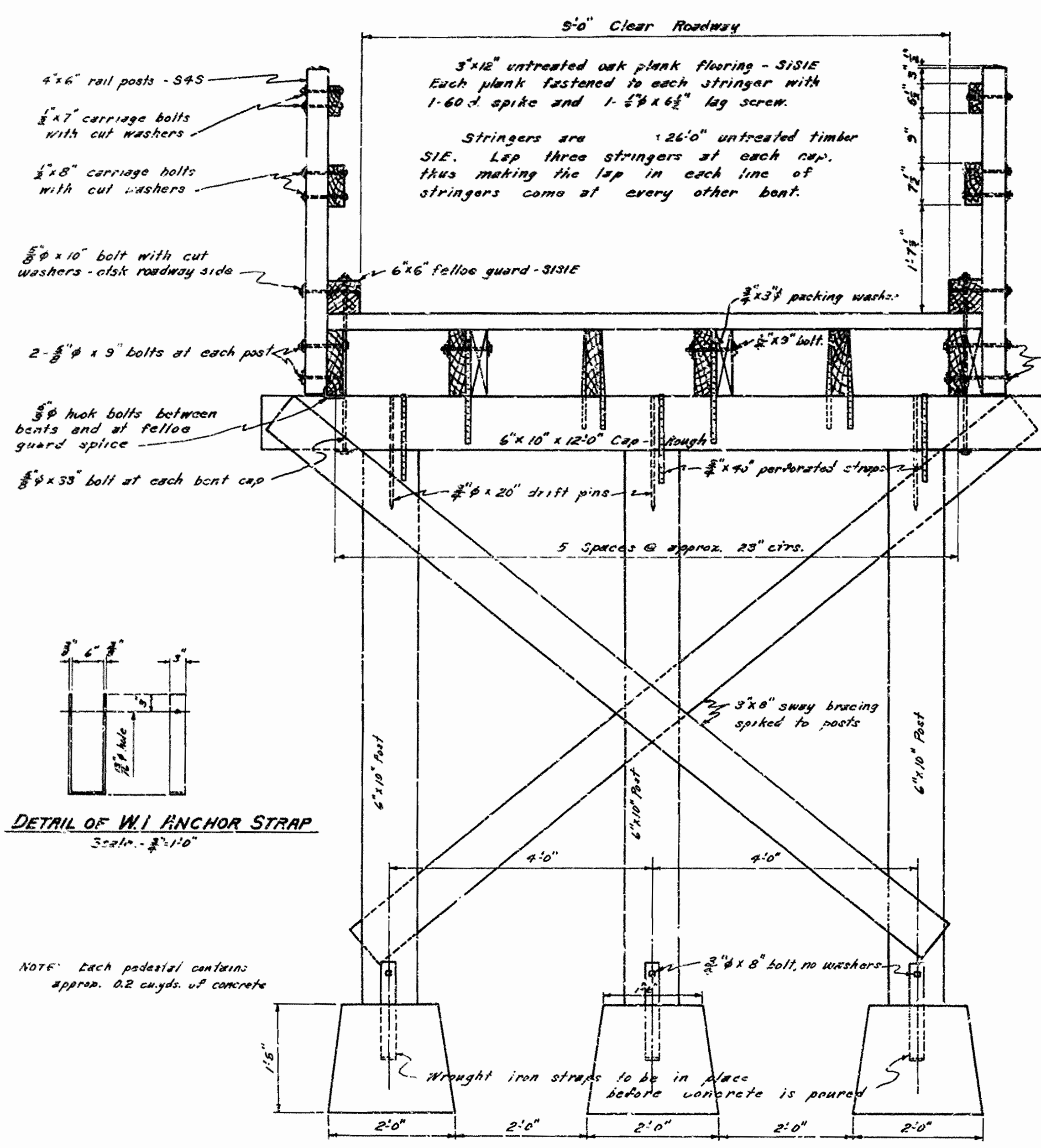
GENERAL NOTES

Rivets 3/8"; open holes 1/2", except as noted. All field connections shall be bolted, using machine bolts, unless otherwise noted.
 All welded connections to be 3/8" fillet welds, except as noted. Welding to be by the electric arc process.
 All holes in tower connections to be sub-punched 1/8" and reamed 1/16" while towers are assembled. This applies to shop as well as field holes.
 Shapes of equal or greater strength may be substituted for structural shapes shown, provided, however, will be made on weight of shapes shown or actually used, whichever is the lesser.
 Shop Paint: All structural steel and steel castings shall be given one coat of red lead and raw linseed oil before shipment.
 Field Paint: 1st Coat, white lead tinted with lamp black; 2nd Coat, Aluminum paint.
 The saddle castings are to be cast steel. The remainder of the tower to be structural steel plates and shapes.
 These drawings show general features of design only. Shop drawings shall be made in compliance with specifications and approval secured before fabrication is begun.
 SPECIFICATIONS: Arkansas State Highway Commission Standard Specifications for Road and Bridge Construction, adopted March 1st 1940.

DETAILS OF SOUTH TOWER OF TUMBLING SHOALS SUSPENSION BRIDGE OVER LITTLE RED RIVER NORTH OF HEBER SPRINGS, ARK. CLEBURNE COUNTY ROUTE 25 SEC. 3.

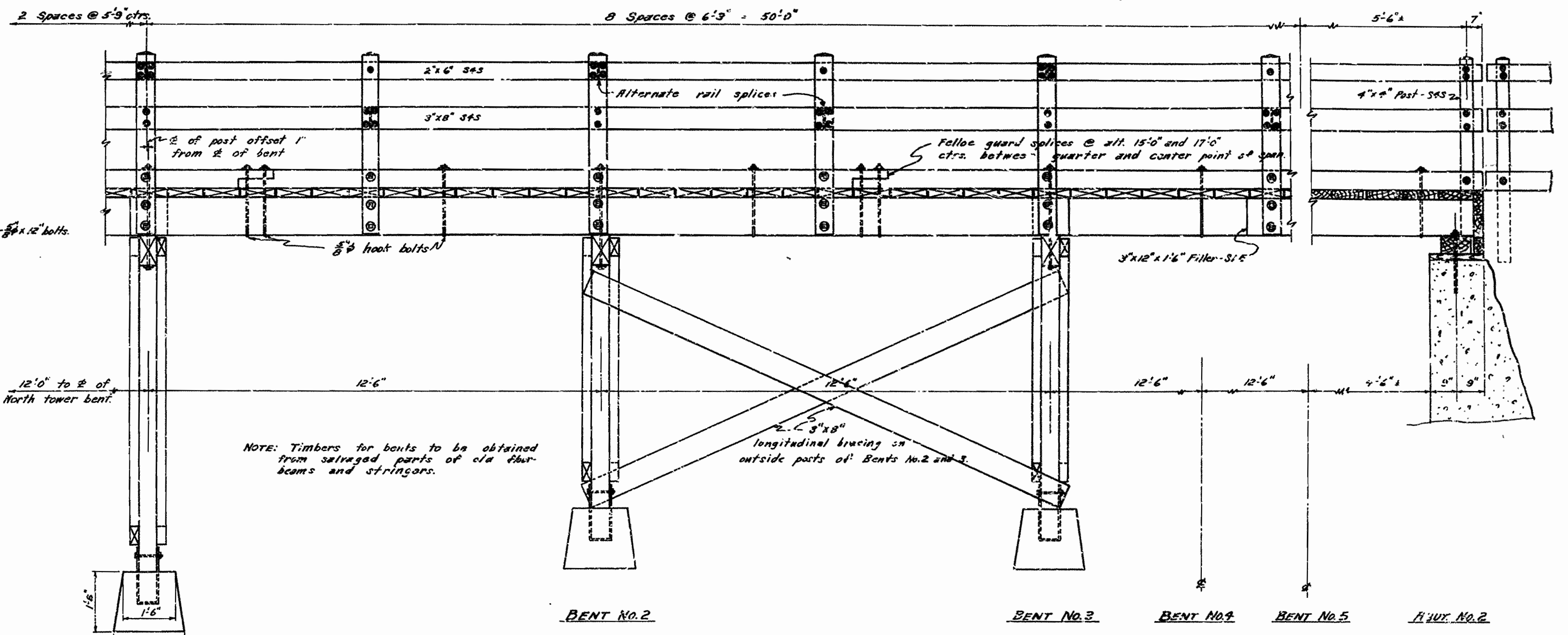
ARKANSAS STATE HIGHWAY COMMISSION
LITTLE ROCK, ARK.
 Drawn By: W.C.H. Date: 3-3-49
 Traced By: W.C.H. Date: 3-3-49
 Checked by: _____ Date: _____
 BADGE No. 1709 DRAWING No. 6705-A

FED. ROAD DIST. NO.	STATE	PROJECT NO.	FISCAL YEAR	SHEET NO.	TOT. SHEETS
6	ARK.				
STATE JOB NO.					

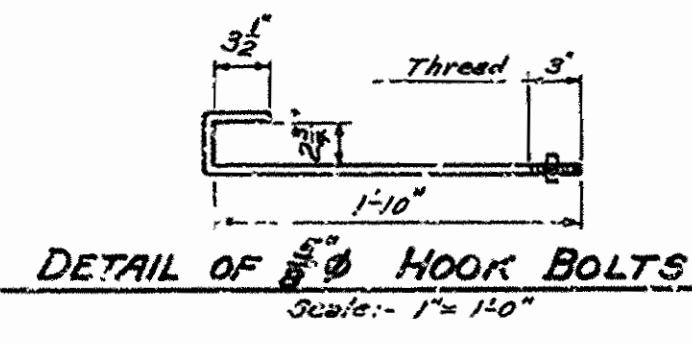


DETAIL OF W1 ANCHOR STRAP
Scale: 1/2" = 1'-0"

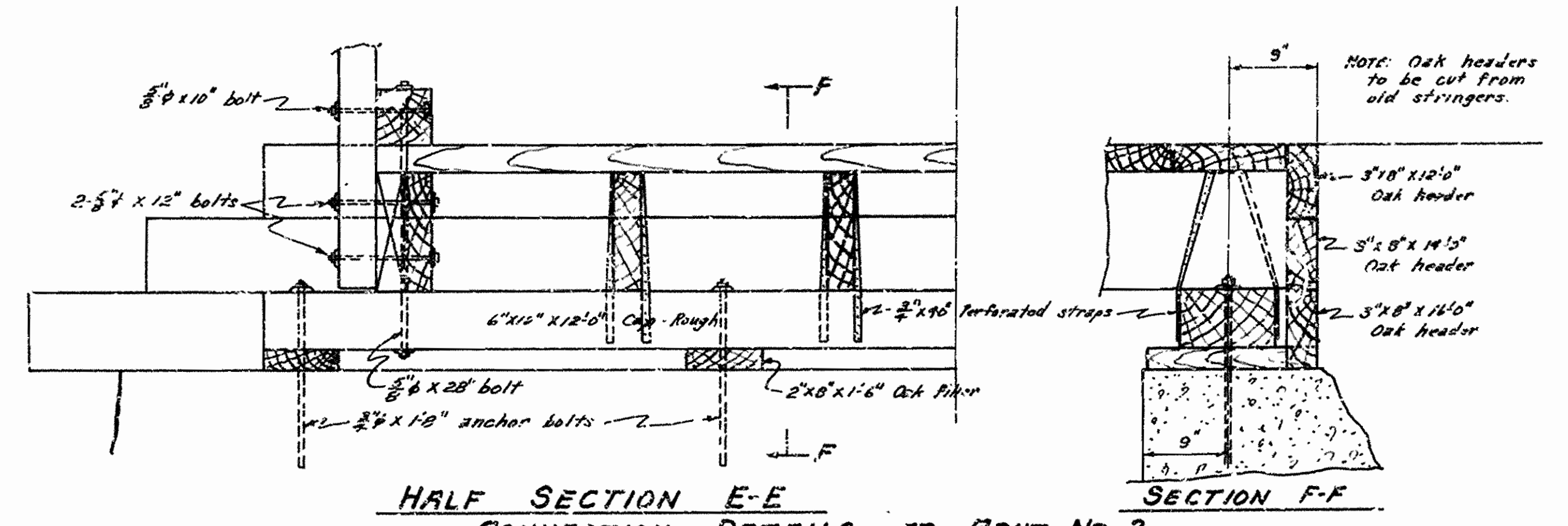
TYPICAL SECTION THRU ROADWAY - SHOWING BENT DETAILS
Scale: 3/8" = 1'-0"



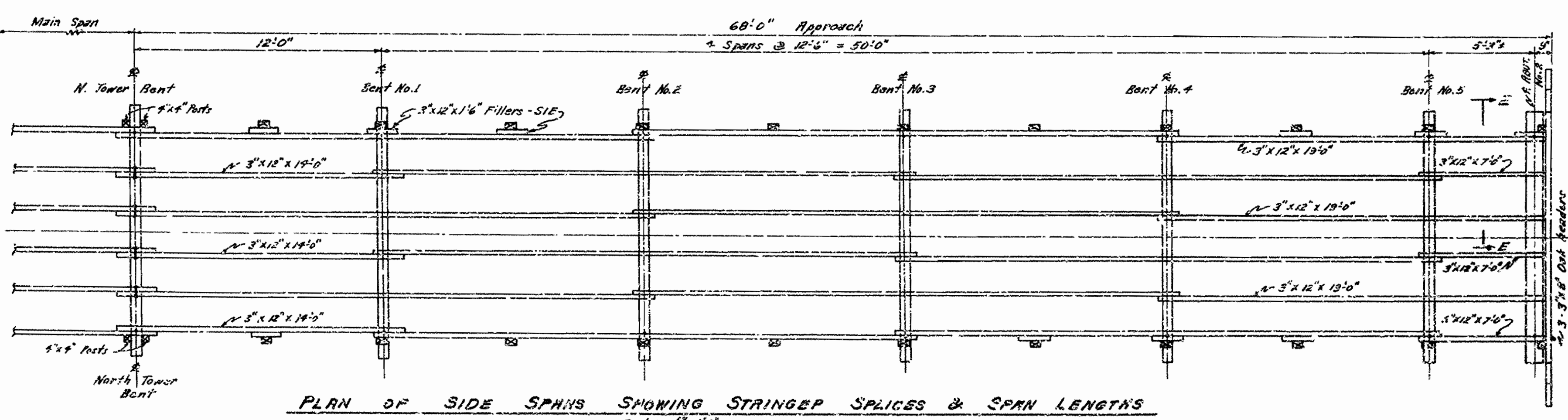
PART EAST SIDE ELEVATION SHOWING TYPICAL DETAILS
Scale: 1/2" = 1'-0"



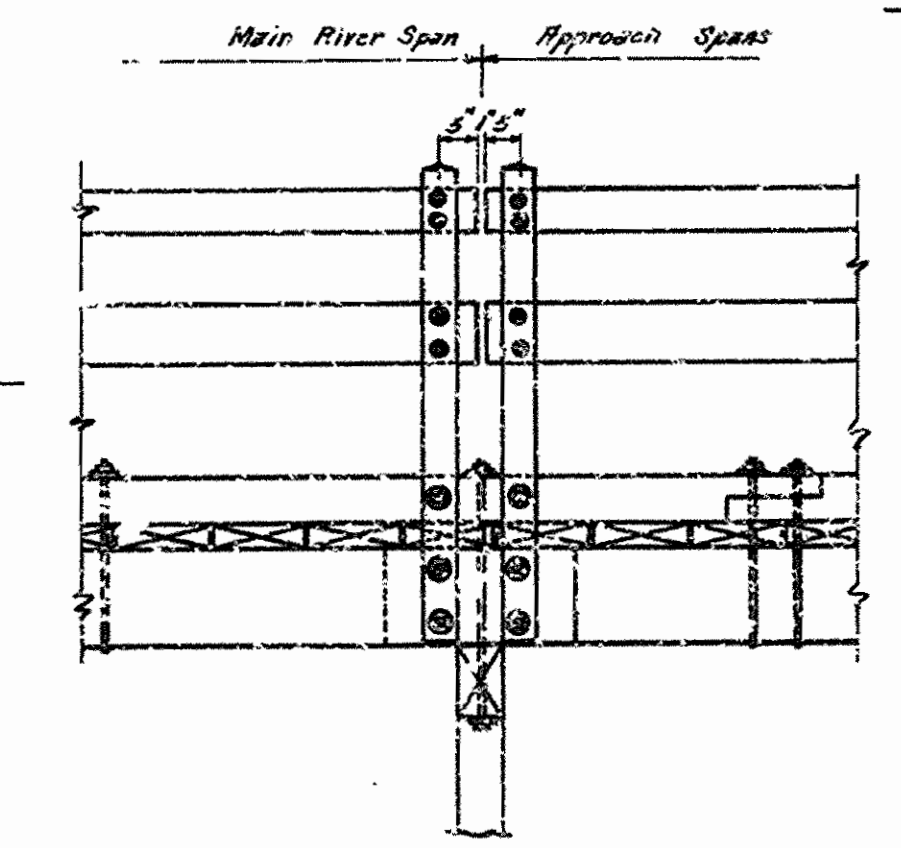
NOTE: Method of fastening stringers to caps is similar to method of fastening stringers to floorbeams in main span.



HALF SECTION E-E CONNECTION DETAILS AT ABUT. NO. 2
Scale: 1" = 1'-0"



PLAN OF SIDE SPANS SHOWING STRINGER SPLICES & SPAN LENGTHS
Scale: 1/2" = 1'-0"



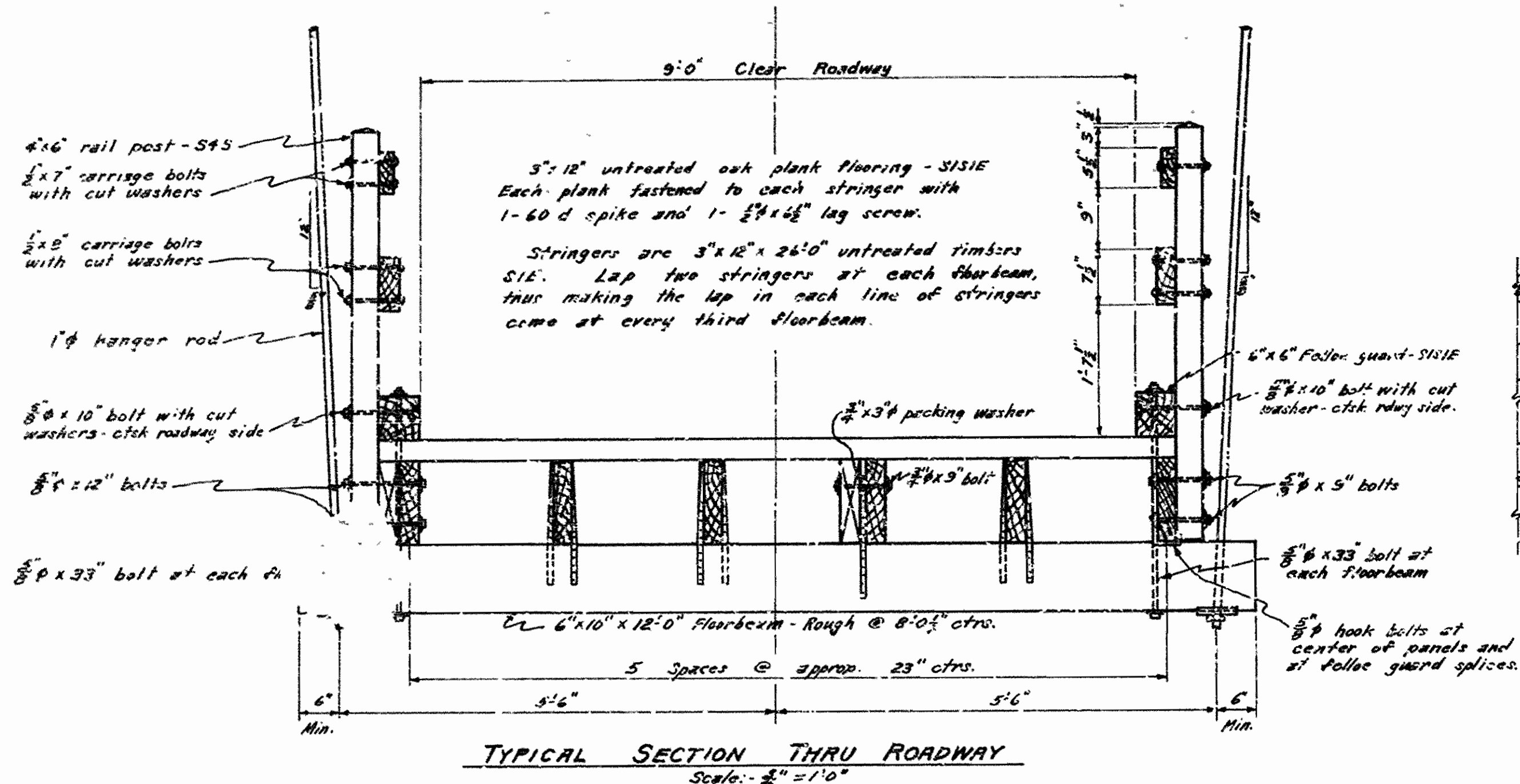
DETAILS AT NORTH TOWER BENT
Scale: 1/2" = 1'-0"

DETAIL OF TIMBER APPROACH SPANS TO TUMBLING SHOALS SUSPENSION BRIDGE OVER LITTLE RED RIVER NORTH OF HEBER SPRINGS, ARK. CLEBURNE COUNTY ROUTE 25 SEC. 3

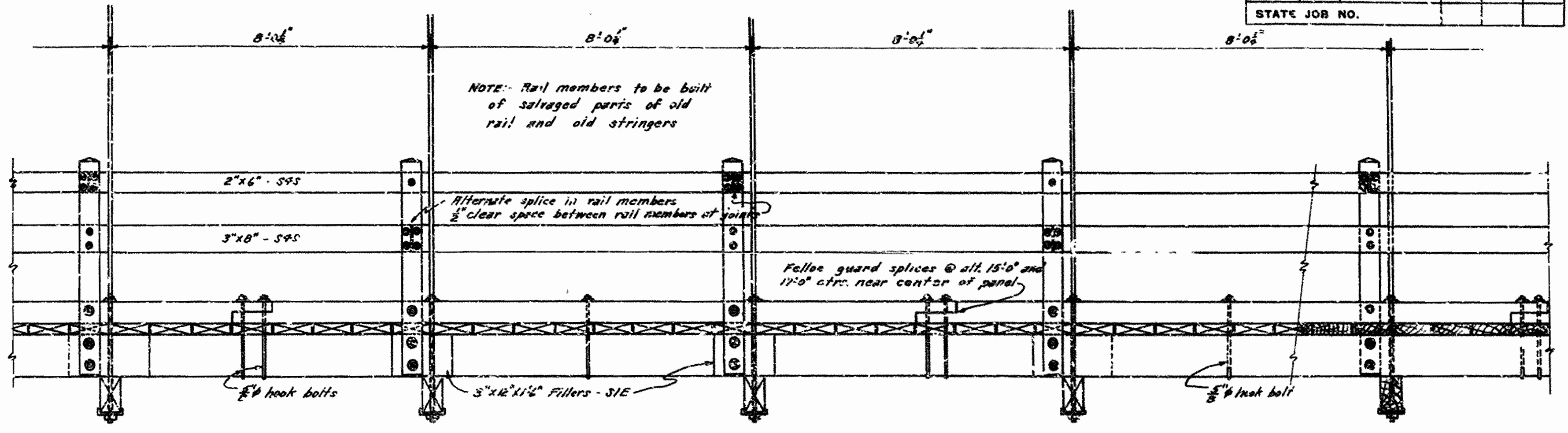
ARKANSAS STATE HIGHWAY COMMISSION
LITTLE ROCK, ARK.
Drawn By: M.C.H. Date: 8-29-39
Traced By: M.C.H. Date: 8-30-39
Checked By: _____ Date: _____
BRIDGE NO. 1709 DRAWING NO. 6405

Principal Highway Engineer - Bridge

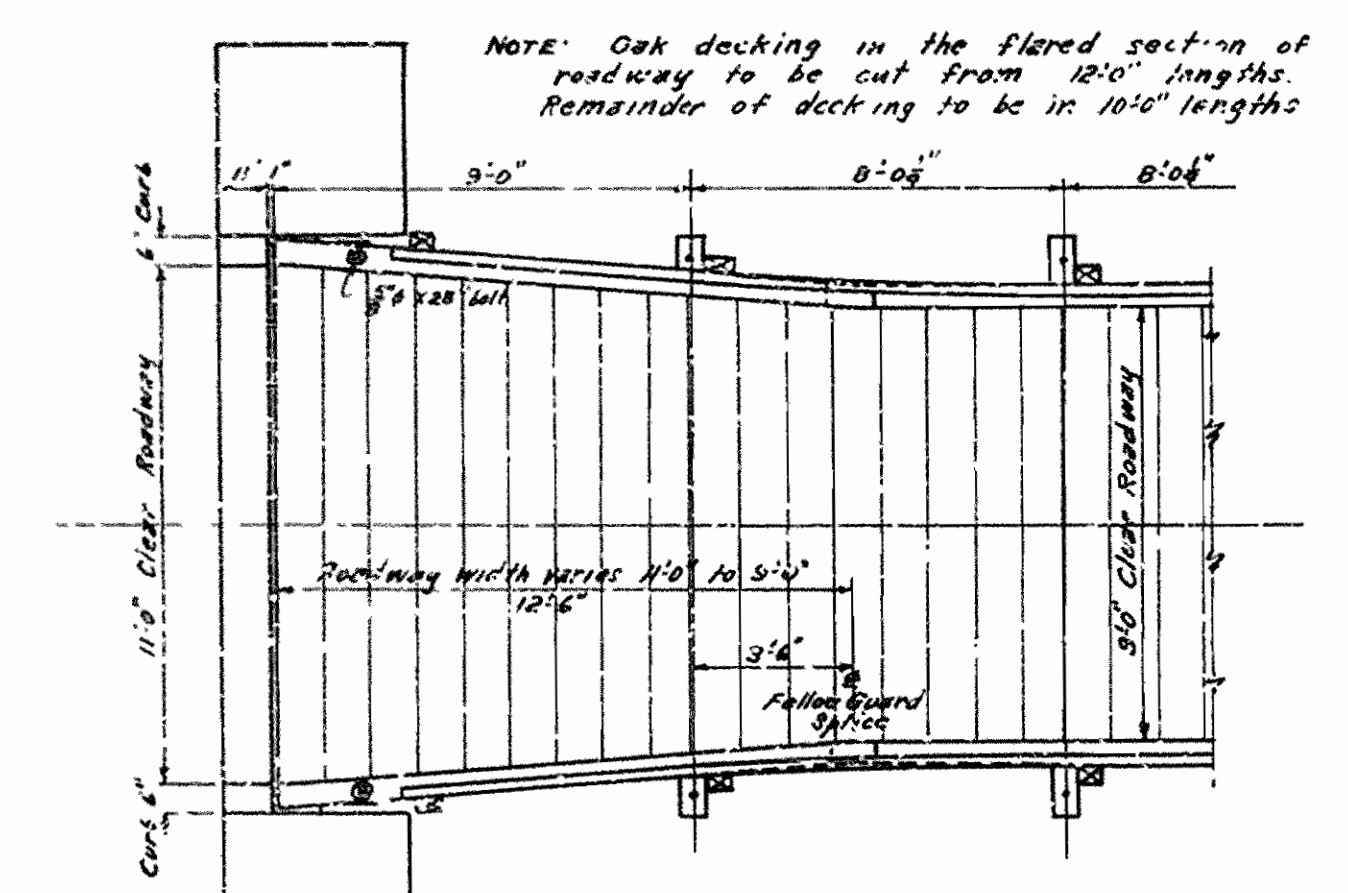
FED. ROAD DIST. NO.	STATE	PROJECT NO.	FISCAL YEAR	SHEET NO.	TOTAL SHEETS
5	ARK.				
STATE JOB NO.					



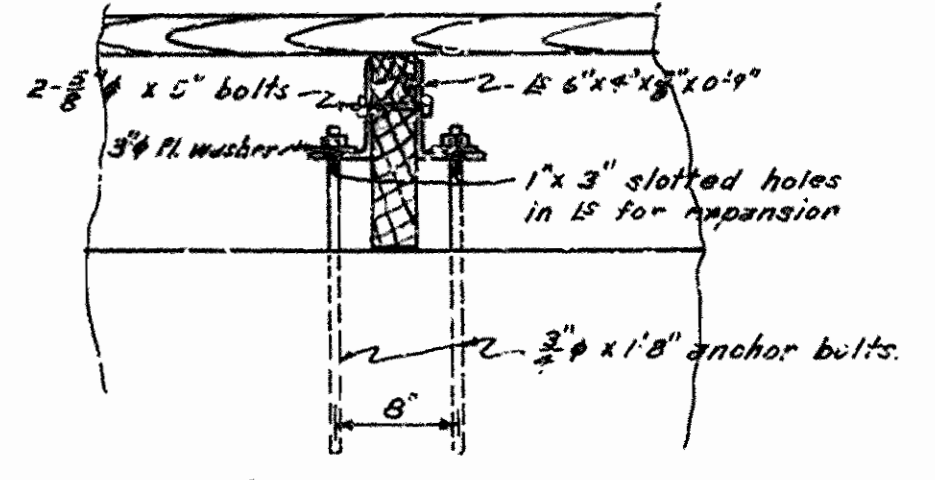
TYPICAL SECTION THRU ROADWAY
Scale: 1/2" = 1'-0"



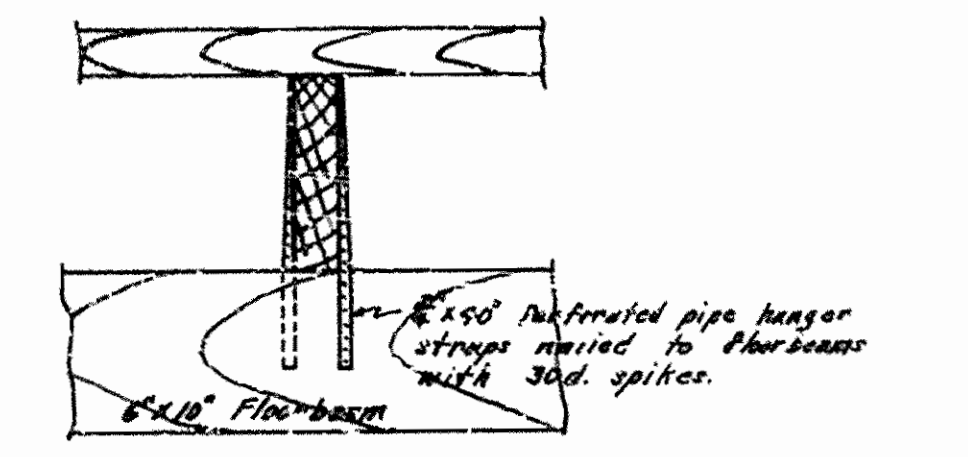
PART SIDE ELEVATION SHOWING TYPICAL DETAILS
Scale: 1/2" = 1'-0"



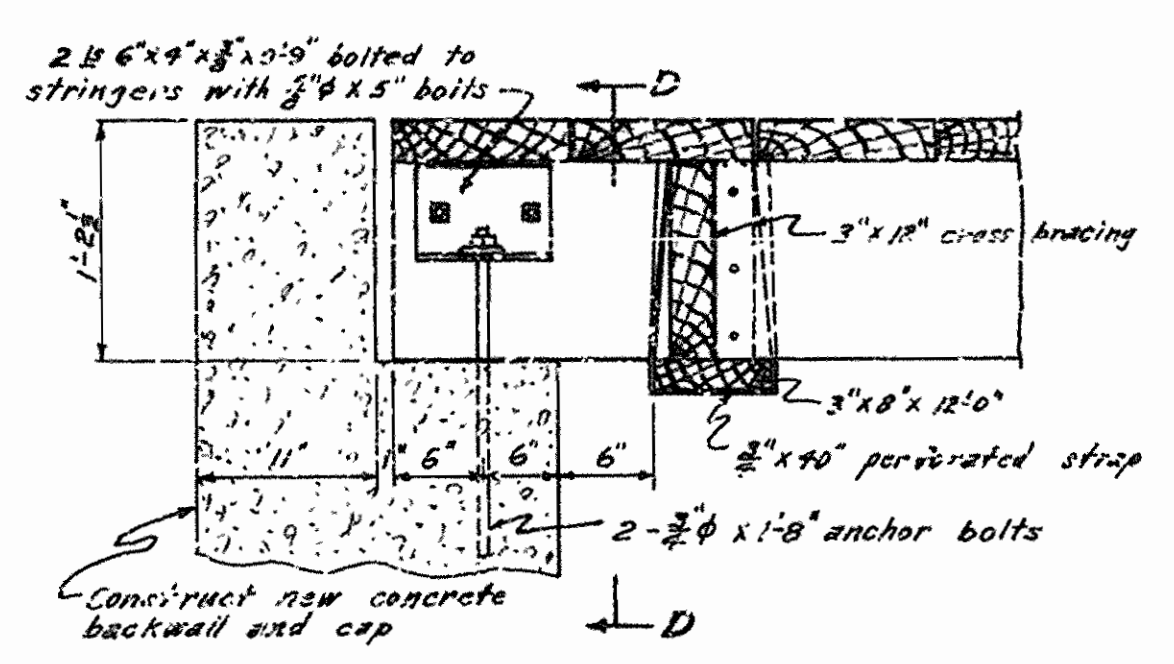
PART PLAN SHOWING FLARE OF ROADWAY AT SOUTH TOWER
Scale: 1/2" = 1'-0"



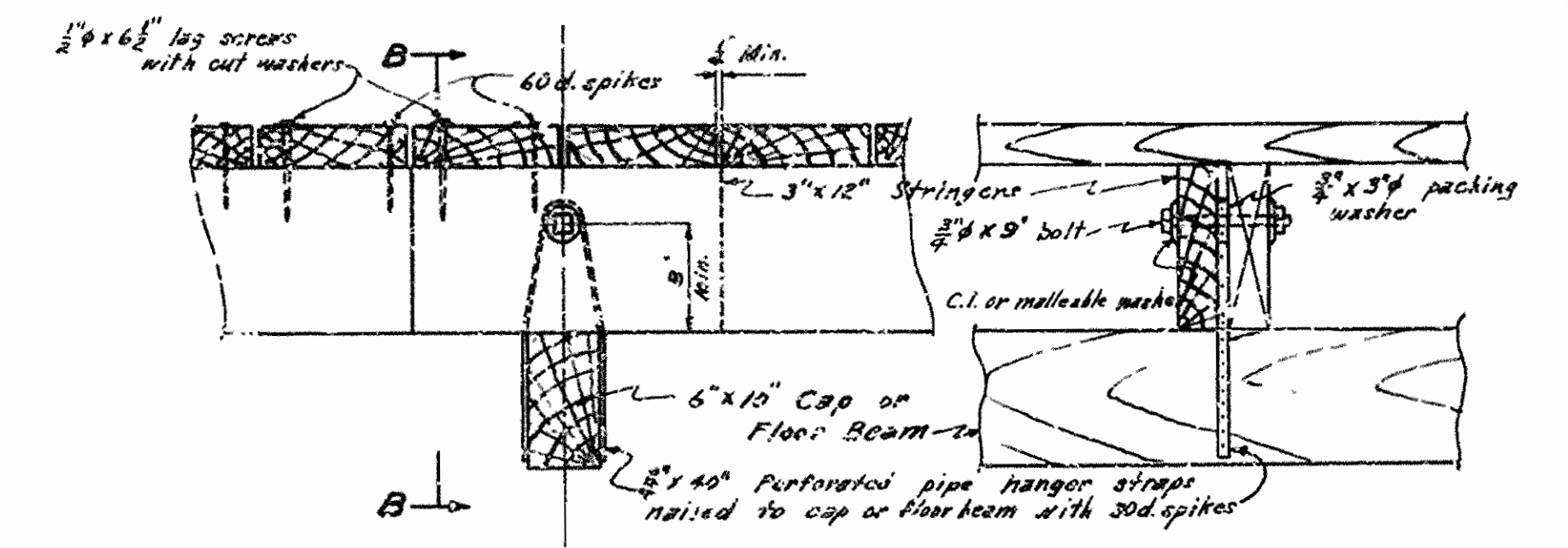
SECTION D-D



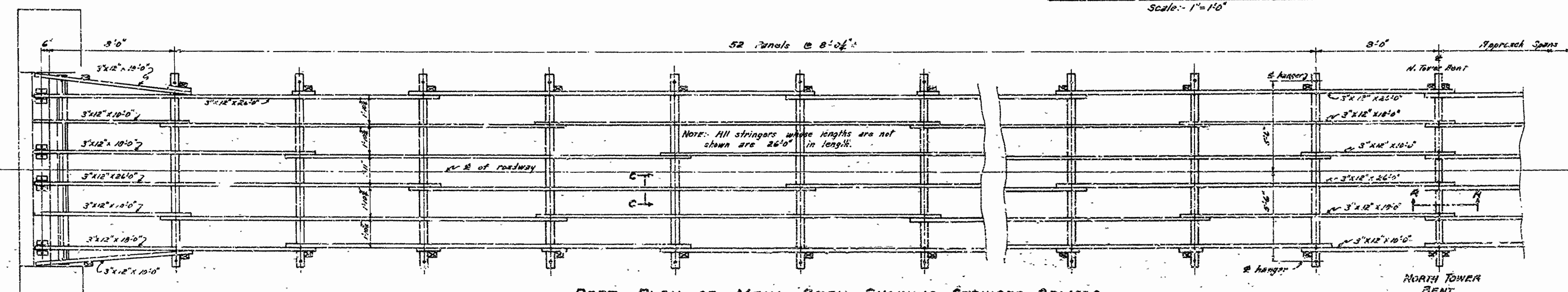
SECTION C-C
DETAIL SHOWING METHOD OF FASTENING INTERIOR STRINGERS TO FLOOR BEAMS AT POINTS OF NO SPLICE
Scale: 1" = 1'-0"



STRINGER CONNECTION DETAILS AT ABUT. NO. 1 - SOUTH TOWER
Scale: 1" = 1'-0"



SECTION A-A SECTION B-B
DETAIL SHOWING METHOD OF FASTENING INTERIOR STRINGERS TO CAP AT NORTH TOWER INTERIOR STRINGERS, AT POINTS OF SPLICE, TO FLOOR BEAMS
Scale: 1" = 1'-0"



PART PLAN OF MAIN SPAN SHOWING STRINGER SPLICES
Scale: 1/2" = 1'-0"

NOTE: Twenty-five old floorbeams, that are in a bad condition, are to be replaced with new. The best of the remaining floorbeams are to be cut, re-lagged for hangers and used.

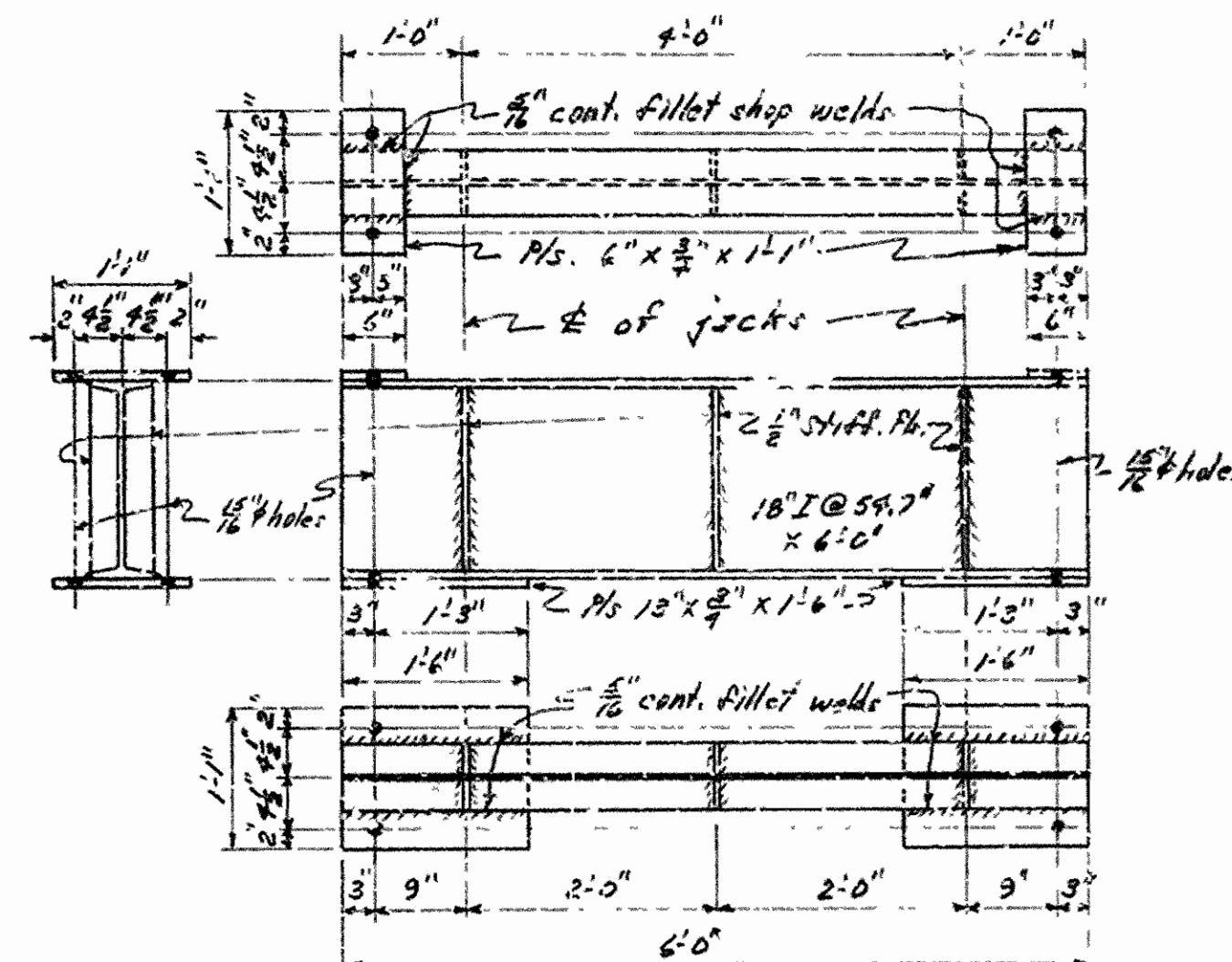
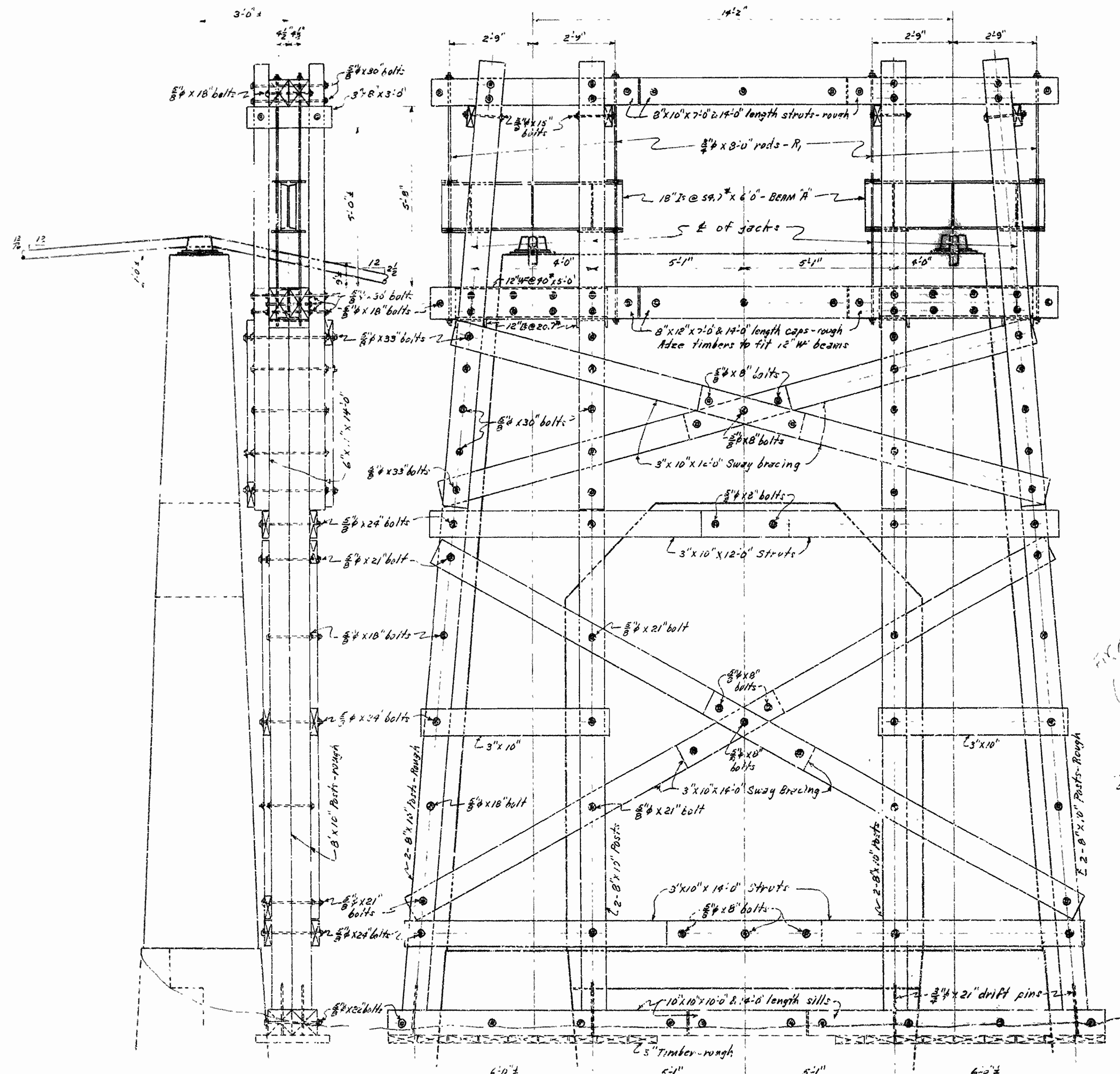
ABUT. NO. 1 AND SOUTH TOWER

DETAIL OF REPAIR OF SUSPENDED SPAN OF TUMBLING SHOALS SUSPENSION BRIDGE OVER LITTLE RED RIVER NORTH OF HEPP SPRINGS, ARK. CLEBURNE COUNTY ROUTE 25 SEC. 3

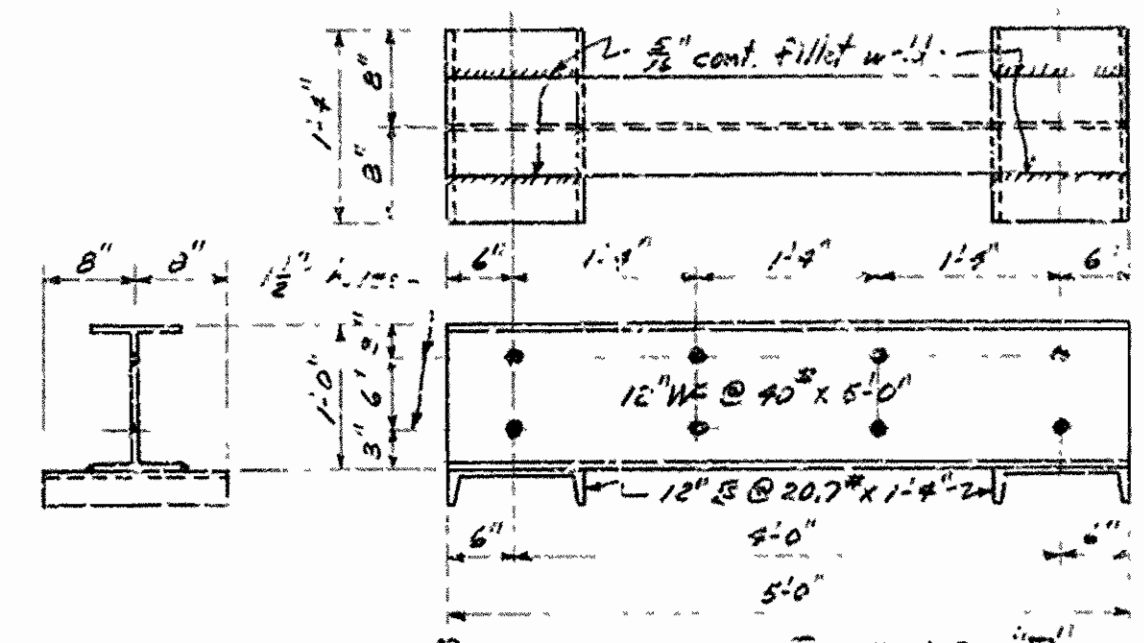
ARKANSAS STATE HIGHWAY COMMISSION
LITTLE ROCK, ARK.
Drawn By: M.C.H. Date: 8-28-39
Traced By: M.C.H. Date: 9-1-39
Checked By: _____ Date: _____
BRIDGE NO. 1709 DRAWING NO. 6304

Principal Highway Engineer (M.C.H.)

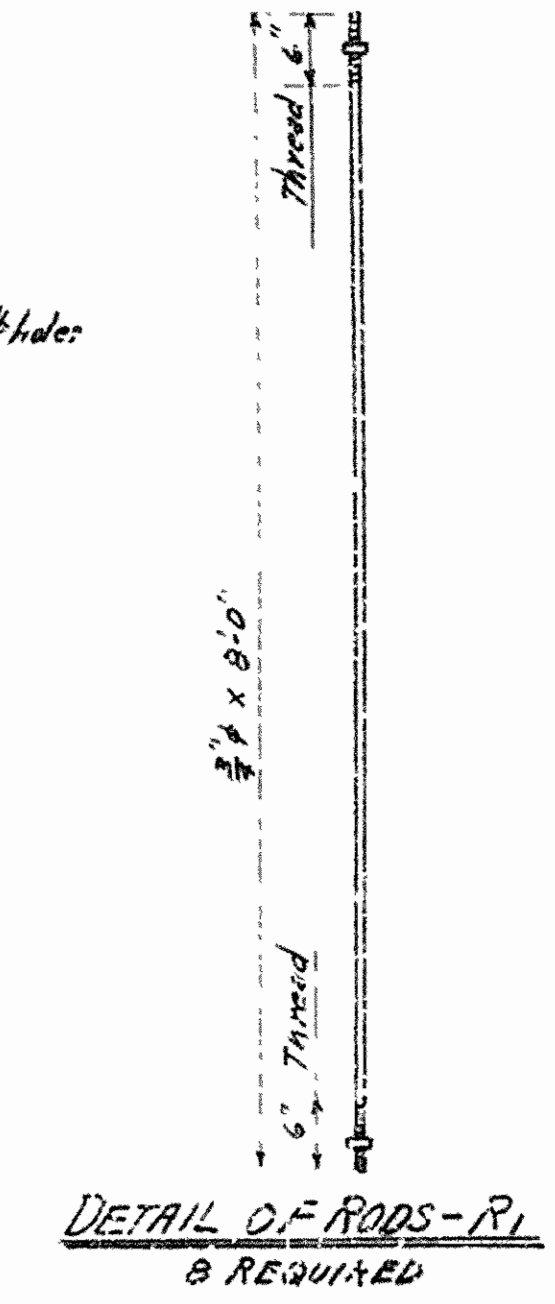
FED. ROAD DIST. NO.	STATE	PROJECT NO.	FISCAL YEAR	SHEET NO.	TOTAL SHEETS
6	ARK.				
STATE JOB NO.					



DETAILS OF BEAMS "A"
2 REQUIRED



DETAILS OF BEAMS "B"
2 REQUIRED



DETAIL OF RODS - R1
8 REQUIRED

- 147 2 - 10" x 10" x 10" Sills - Rough.
- 274 2 - 10" x 10" x 14" Posts - " "
- 336 3 - 8" x 12" x 14" Caps - " "
- 280 4 - 8" x 10" x 14" Struts - " "
- 176 2 - 8" x 10" x 20" Posts - " "
- 560 8 - 6" x 10" x 14" Posts - " "
- 552 6 - 3" x 10" x 14" Struts - " "
- 280 4 - 3" x 10" x 14" Sway Bracing - " "
- 180 4 - 3" x 10" x 12" Struts - " "
- 4133 6 - 3" x 10" x 14" Mud Sills - Rough.

LIST OF HARDWARE REQUIRED

- 8 - 3/4" x 31" Drift Pins. 246
 - 8 - 5/8" x 33" M. Bolts. 240
 - 28 - 5/8" x 30" " " 277
 - 12 - 5/8" x 24" " " 264
 - 10 - 5/8" x 22" " " 200
 - 8 - 5/8" x 21" " " 178
 - 26 - 5/8" x 18" " " 174
 - 8 - 5/8" x 15" " " 147
 - 21 - 5/8" x 8" W. Bolts. 41
 - 16 - 5/8" C. G. Washers. 120
 - 250 - 5/8" O. G. Washers. 1560
 - 200 - 60d. Spikes. 4338
- Red threaded bolts ends ordered.
2446
3900

DETAILS OF
TEMPORARY ERECTION TOWER
FOR TUMBLING SHOALS SUSPENSION
BRIDGE OVER LITTLE RED RIVER
NORTH OF HEBER SPRINGS, ARK.
CLEBURNE COUNTY
ROUTE 25 SEC. 3.

ARKANSAS STATE HIGHWAY COMMISSION
LITTLE ROCK, ARK.
Drawn By: W.C.H. Date: 3-3-49
Traced By: R.C.H. Date: 3-11-49
Checked By: _____ Date: _____
Scale: 3/4" = 1'-0"
EXCEPT AS NOTED
BRIDGE NO 1709 DRAWING NO. 6405-B